

- Parenting Practices as Mediators of Mothers' Community Violence Exposure on Young Children's Aggressive Behavior

Saijun Zhang, PhD candidate

Mary Keegan Eamon, PhD

University of Illinois at Urbana-Champaign

14th Annual Conference of the Society for Social Work and Research, San Francisco, CA, January 14-16, 2010

Why This Study?

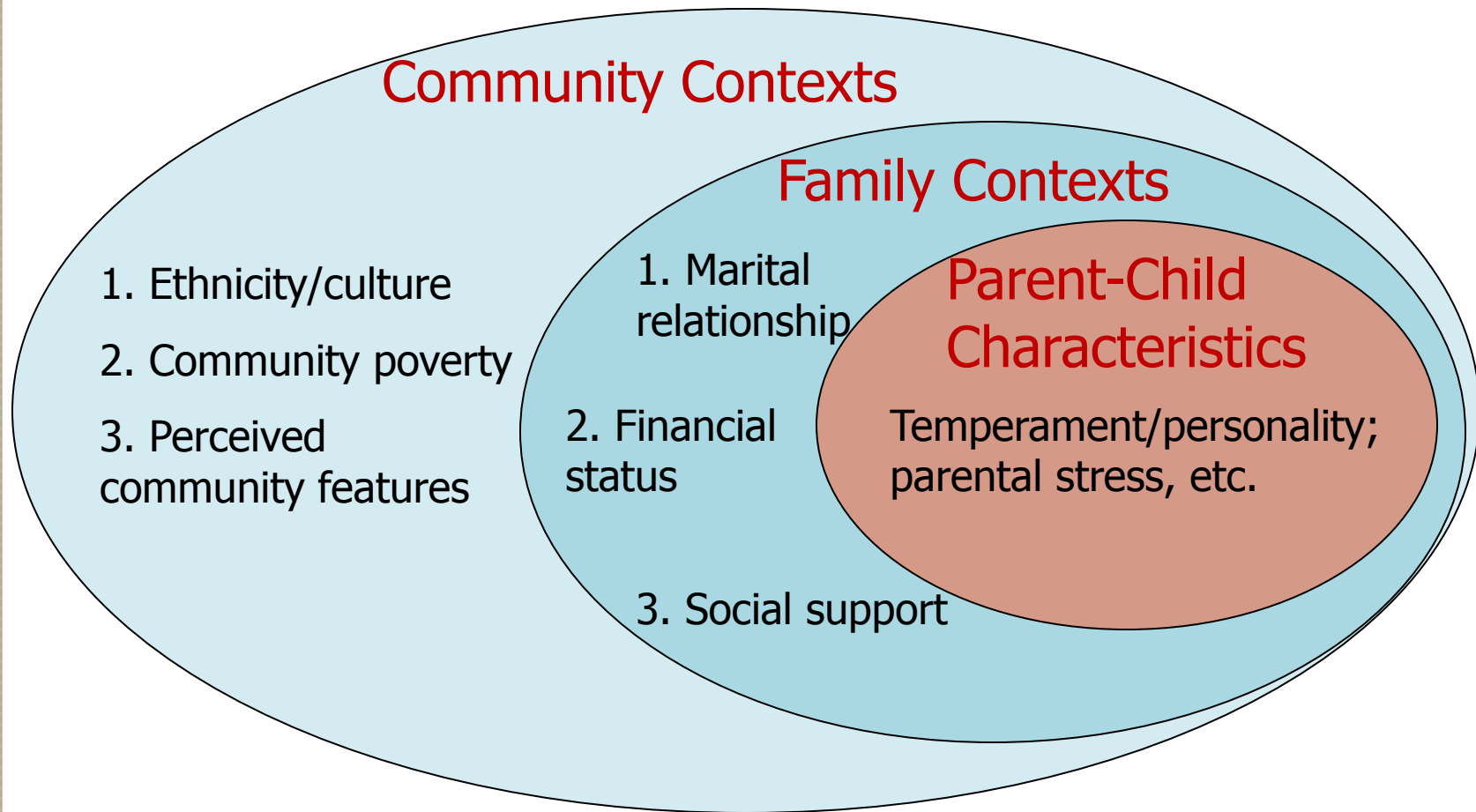
- Community violence a serious concern
- Current research on community violence exposure primarily targets effects of children's exposure
 - depression
 - delinquency, antisocial, and violent behavior
 - poor academic performance

Theories

- Social context theory
 - Viewing violence exposure as a community/neighborhood characteristic
 - Objective indicators (e.g., Brooks-Gunn et al., 1993)
 - Subjective indicators (e.g., Sampson, 1991, 2003)
 - Perception
 - Observation
- Family stress theory
 - Viewing violence exposure as a life stressor (e.g., Kotchick et al., 2005)

Figure of Parenting Contexts

- Kotchick & Forehand (2002)



Literature

- Effects of parents' violence exposure on child aggression
 - Local crime and parent perceptions of community violence and other problems
 - Combined parent and child violence exposure (Linares et al., 2001; Oravecz et al., 2008)
 - Combined parent violence exposure with other environmental factors (Cohen, et al., 1990)

Literature (cont.)

- Effects of parents' violence exposure on parenting
 - Social disorganization on less warm and consistent parenting (Pinderhughes et al. 2001)

Literature (cont.)

- Effects of aggressive parenting on child aggressive behavior
 - Child physical and emotional abuse (Kaplan et al., 1999)
 - Aggressive physical and psychological parenting (Gershoff, 2002)
 - Child abuse and harsh parenting a continuum (Knutson et al., 2004)

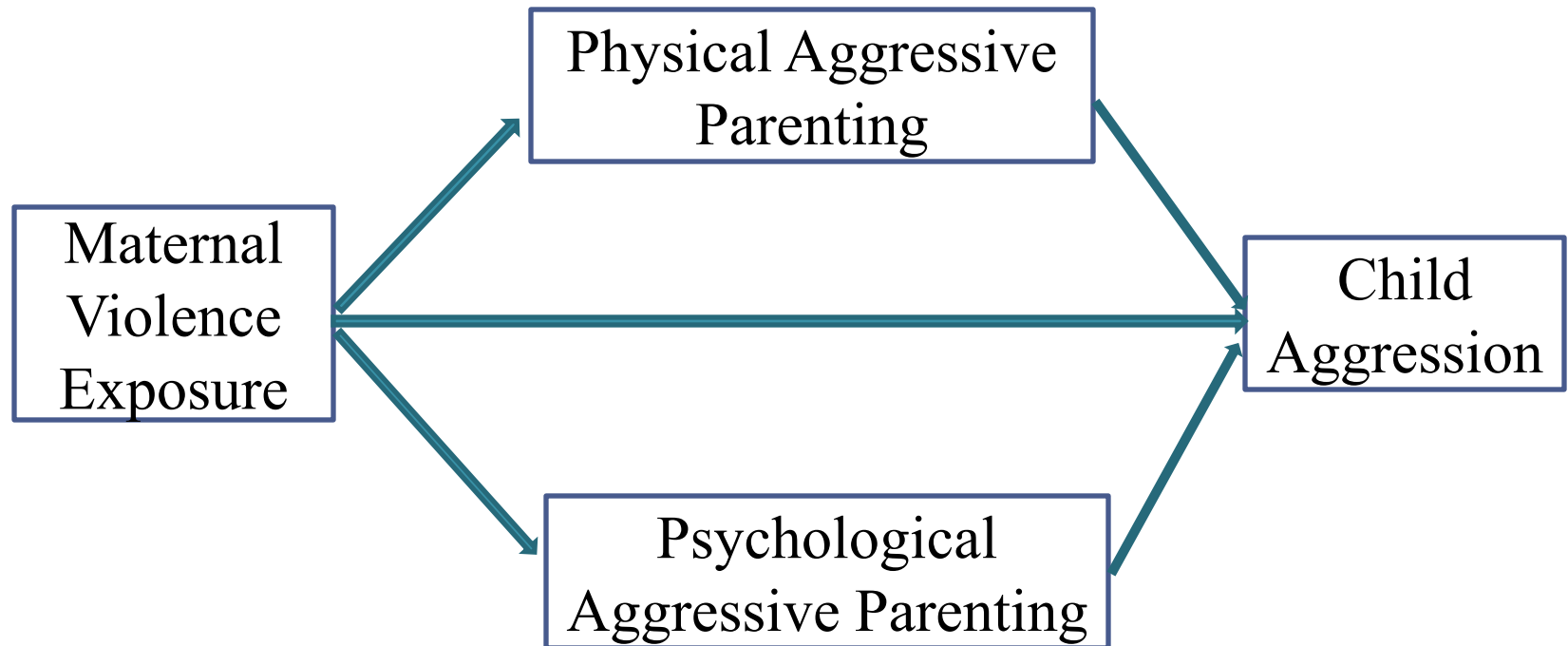
Limitations of Previous Studies

- Few studies have examined effects of mothers' violence exposure on child behavior
- Studies usually have used small, convenient samples
- Few studies have examined whether parenting practices mediate the effects of parents' violence exposure on child wellbeing

Purpose of This Study

- This study examines whether
 - mothers' violence exposure is related to child aggression
 - mothers' violence exposure is related to psychological and physical aggressive parenting
 - aggressive parenting is related to child aggression
 - aggressive parenting mediates the relation between mothers' violence exposure and child aggression

Hypothesized Model



Data and Methods

- Data (N=2,247)
 - Fragile Families and Child Wellbeing Study (FFCW) wave 4 mother core data (2003-2006)
 - In-home survey of 5-year-old children
- Methods
 - Ordinal logistic regression and OLS regression

Measures – Dependent Variable

- Child aggression
 - Twenty items from the Child Behavior Check List (4-18), such as
 - arguing a lot
 - fighting a lot
 - destroying things
 - demanding a lot of attention
- Responses: yes (1); no (0)

Measures – Independent Variable

- Mothers' violence exposure
 - In the past year, frequency of witnessing and/or being a victim of
 - beating
 - attack with a weapon
 - shooting
 - killing
 - Responses: never to more than 10 times (5-point scale)

Measures - Mediators

- Physical aggressive parenting
 - In the past year, frequency (0-20 times on a 6 point scale) the mother
 - spanked with hand
 - hit child's bottom with an object
 - slapped
 - pinched
 - shook

Measures – Mediators (cont.)

- Psychological aggressive parenting
 - In the past year, frequency (0-20 times on a 6 point scale) the mother
 - shouted, yelled, or screamed
 - threatened to spank or hit
 - swore or cursed
 - called child dumb or similar names
 - threatened to kick the child out of home

Control variables

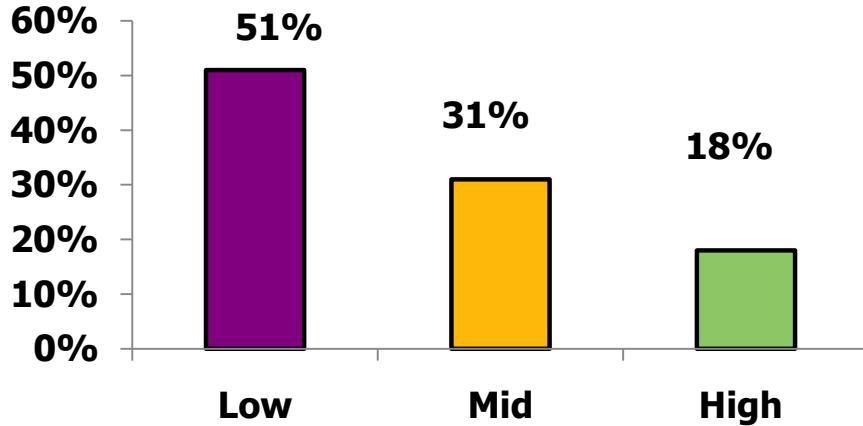
- Demographic characteristics: age, race/ethnicity
- SES: education, marital status, number of children, family income, employment status, FS and TANF receipt
- Health and others: maternal alcohol consumption, health status, and stress level

Variable Construction

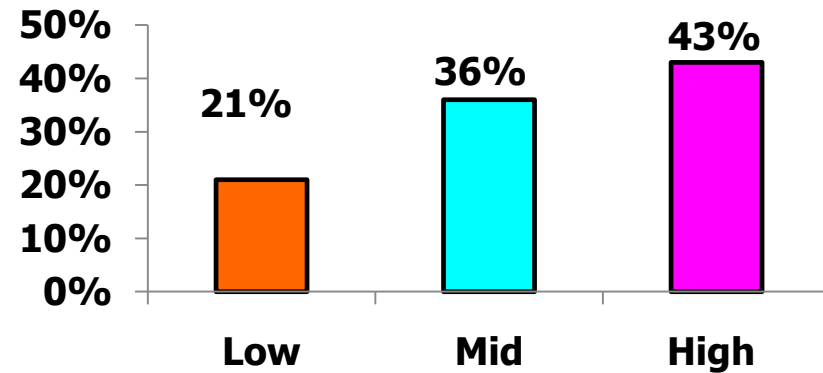
Variable	Cont./Category	Value Range
Child Aggression ($\alpha=.86$)	Continuous	0-36 (M=10.8)
Psychological aggressive parenting ($\alpha=.52$)	Low	0-2
	Moderate	3-5
	High	6-27
Physical aggressive parenting ($\alpha=.51$)	Low	0-5
	Moderate	6-10
	High	11-26
Violence exposure ($\alpha=.70$)	Never	0
	1-2 times	1-2
	3 and more times	3-13

Selected Sample Characteristics

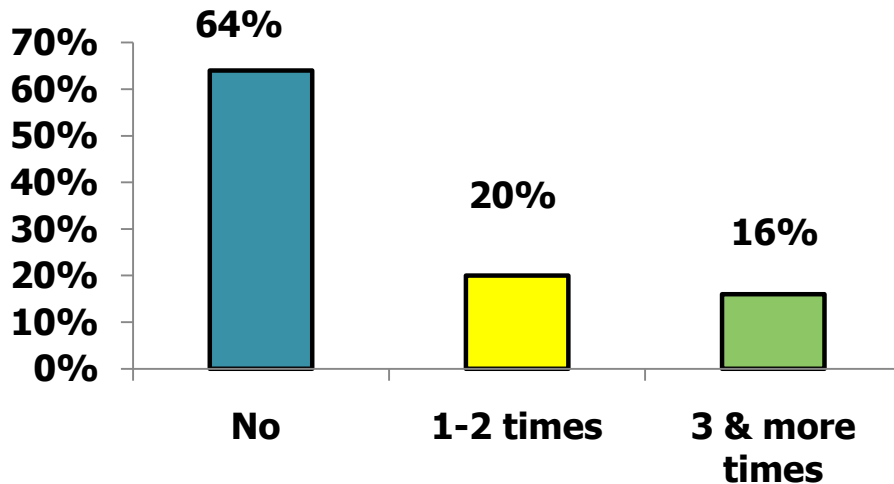
Physical Aggression



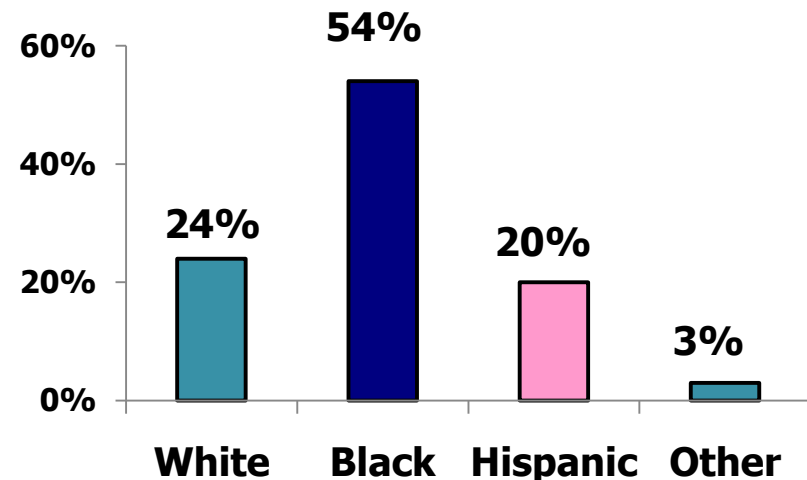
Psychological Aggression



Violence Exposure

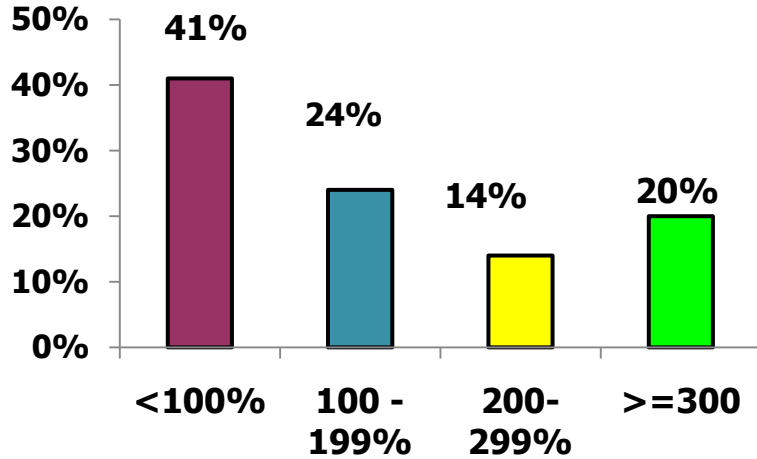


Race/ethnicity

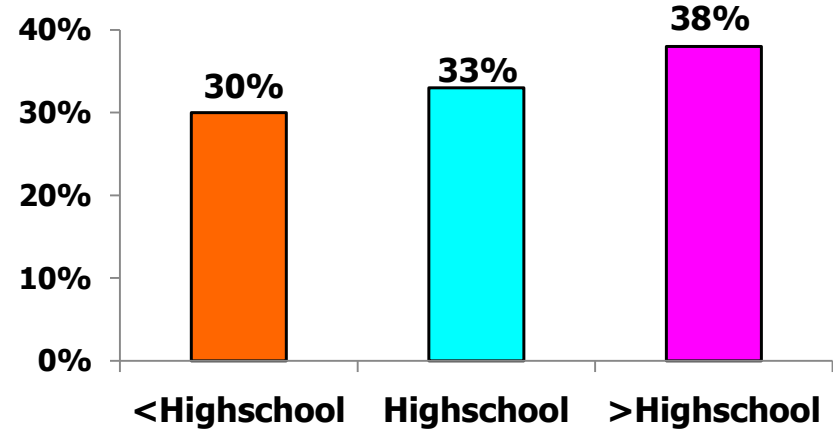


Sample Characteristics (cont.)

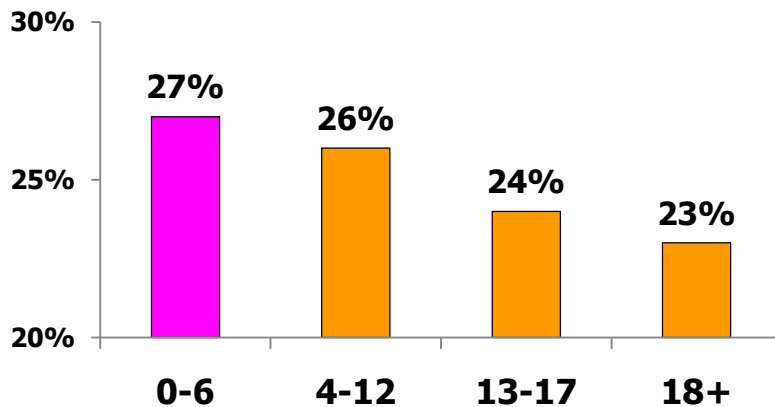
Family Income



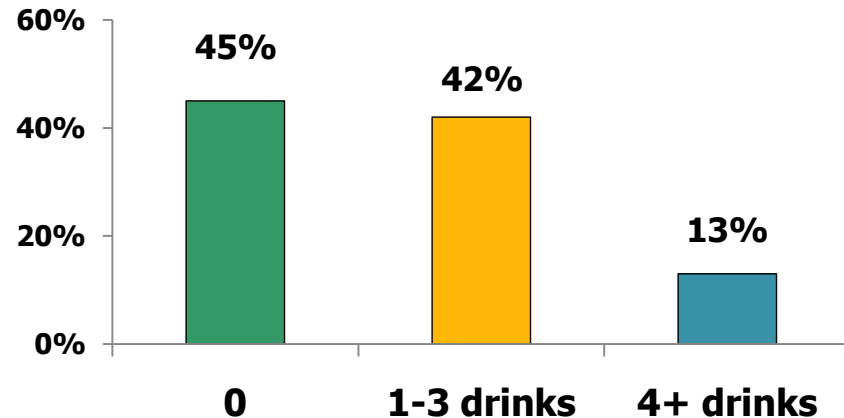
Education



Maternal Stress



Maximum Alcohol Drinks/Day



Multivariate Analysis

Variable	Child Aggression	Psych Aggr Parenting	Physic Aggr Parenting	Child Aggression
	Coeff. (OLS)	OR (OL)	OR (OL)	Coeff. (OLS)
Psych Aggr Parenting (Low)				
Moderate				1.45***
High				3.54***
Physic Aggr Parenting (Low)				
Moderate				1.51***
High				2.54***
Mom Violence Expo (0)				
1-2 times	1.22***	1.40**	1.50***	0.77*
3 & more times	1.80***	1.74***	1.53***	1.22***
<i>R-square</i>	.16	.10	.11	.25

Note: Control variables not shown



Findings

- Mothers' violence exposure increases child aggression
- Mothers' violence exposure increases both psychological and physical aggressive parenting
- Both types of aggressive parenting increase child aggression
- When aggressive parenting is controlled, coefficients for relations between mothers' violence exposure and child aggression decline by about 1/3

Implications

- Parenting and child behavior intervention programs need to screen parents' violence exposure as a risk factor
- Efforts for reducing community violence
- Strategies such as Post-Traumatic Stress Disorder (PTSD) relief may be worth consideration

Future research

- Longitudinal study to establish more substantial causal relationships of the proposed model
- Studies that can exclude child community violence exposure as a potential confounding factor



Thank you!